

# XGA20ACE

Articulated boom lift

## FEATURES

## MEASUREMENTS

20.6m working height

Up to 256/350kg (limited/unlimited) lift capacity

## PRODUCTIVITY

1.8m×0.76m steel platform

4 driving wheels

2 steering wheels

45% theoretical gradeability

Solid non-marking tires

Platform automatic leveling system

160° platform rotation

Fully proportional multi-function controls

Drive enable

Horn

Hourmeter record

Tilt alarm

Lift and lower alarm

Drive alarm

360° continuous turntable rotation

Lockable turntable cover

High/Slow speed mode

Flashing beacon

Axle balance system

## POWER

3.3kw/32V AC drive motors

420Ah/48V DC power source

## OPTIONS

Foam-filled rough terrain tires

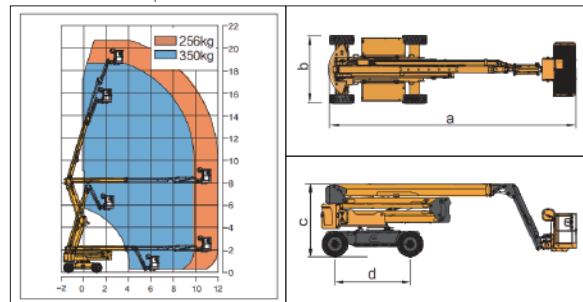
Tool tray

Platform working light

AC power to the platform



Work Curve Graph



Item	Unit	XGA20ACE
Working Height	m	20.6
Platform Height	m	18.6
Working radius	m	11.98
Lift capacity	kg	256/350
1st Boom luffing range	°	0~+72
2nd Boom luffing range	°	0~+73
Fly jib luffing range	°	-64~+70
Turntable rotation	°	360
Platform rotation	°	160
Tailswing	mm	560
Drive Speed	km / h	4.8
Turning Radius (inside)	m	3.4
Turning Radius (outside)	m	5
Ground clearance	mm	300
Gradeability	%	45
Tires	-	Non-marking tire
Control system	-	12V DC proportional control
Emergency control unit	-	12V DC battery
Power source	V/Ah	48/420(DC)
Main power unit	kW / V	12/32(AC)
Auxiliary power unit	kW / V	2.3/12(DC)
Drive Motor	kW / V	3.3/32(AC)
Hydraulic tank	L	82
Weight	kg	9100
Platform size	mm	1800×760
a Length	mm	8490
b Width	mm	2490
c Height	mm	2380
d Wheelbase	mm	2500