

# XG1823RT

## Rough terrain scissor lift

### FEATURES

#### PRODUCTIVITY

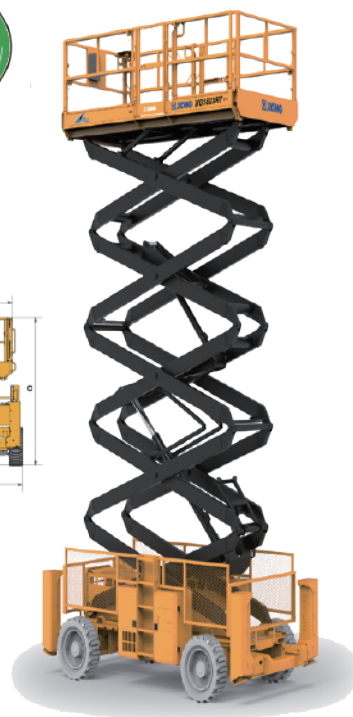
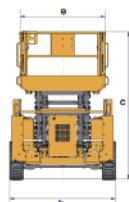
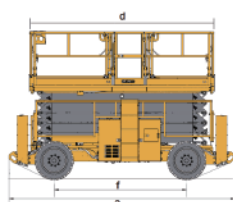
- 18.1m working height
- Up to 680kg lift capacity
- 4 driving wheels
- 40% theoretical gradeability
- Outrigger leveling system
- Both platform and ground control panel with emergency stop button
- 4-wheel multi-disc brakes
- Solid rough terrain tires
- Hourmeter record
- Tilt alarm
- Lift and lower alarm
- Horn
- Dual flashing beacons
- Drive alarm
- Overload alarm

#### POWER

- 12V DC emergency power
- Kubota Euro stage V emission
- 115L hydraulic oil tank
- 115L diesel fuel tank

### OPTIONS

- Axle balance system
- The lower frame protection device
- Platform working light
- AC power to the platform



Item	Unit	XG1823RT
Lift capacity	kg	680
Lift capacity of auxiliary platform	kg	230
Occupant Capacity	-	4
Working height	m	18.1
Platform height	m	16.1
Length of auxiliary platform	mm	1450/1140
Ground clearance	mm	253
Turning radius(inside/outside)	m	2.5/5.6
Drive speed-full retracted	km/h	6.1
Drive speed-full extended	km/h	1.1
Lift/Lower time	s	55/55
Gradeability	%	40
Tilt alarm(side/forward and backward)	°	2/3
Power source	-	Kubota V2403
Rated power	kW/(r/min)	36.8/2700
Tires	-	33 × 12-20
Fuel tank	L	115
Hydraulic tank	L	115
Weight	kg	8000
a Length(without ladder)	mm	4860(3980)
b Width	mm	2286
c Height(platform folded)	mm	3170(2510)
d x e Platform size(Length x Width)	mm	3980 × 1830
f Wheelbase	mm	2850