

SOLID TO SUCCEED

XC7-SR07E

XCMG
Electric Skid
Steer Loader



**XCMG EARTHMOVING MACHINERY
BUSINESS DIVISION**

ADDRESS: NO. 99, KUNPENG NORTH ROAD, XUZHOU ECONOMIC
DEVELOPMENT ZONE, JIANGSU PROVINCE, CHINA
ZIP CODE: 221004 EMAIL: sales@xcmg.com
TEL: +86-51687560286 SITE: <http://www.xcmg.com>



About XCMG

As a 100 billion-level leading company renowned for the largest scale, the most advanced technology, the largest export volume, and the highest competitiveness and influence in China's construction machinery industry, Xuzhou Construction Machinery Group Co., Ltd. (XCMG) not only has dominated the Chinese market for decades, but also is committed to expanding its worldwide presence as the third largest supplier in this field and 395th of Global 500.

The product portfolio offered by XCMG covers 16 categories such as hoisting machinery, excavation machinery, concrete machinery, mining machinery, earthmoving machinery, and road construction machinery, as well as three key components, i.e., hydraulic systems, transmission systems and electrical control systems. In these areas, our hoisting machinery ranks first in the world, and our complete solutions for road construction and maintenance machinery, piling machinery and concrete machinery also take the leading position in global rankings.

XCMG has been granted more than 8,000 patents in total, including more than 1,900 invention patents and more than 130 international PCT patents.

We have established our own R&D centers, manufacturing plants or KD factories in more than 10 countries, e.g., Germany, USA, Brazil and India, and have acquired 3 European companies including Schwing from Germany.

The manufacturing factory in Brazilian, which is built on a barren land with an investment of USD 350 million, has become a successful model of China-Brazil economic cooperation. At present, our products are exported to 187 countries and regions, covering 97% of the countries along the "Belt and Road". XCMG takes the largest share of the business exported to 35 countries, with the annual export volume and overseas revenue remaining in first place and outperforming all other competitors in China.

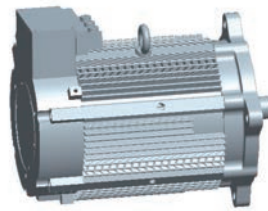


Main features

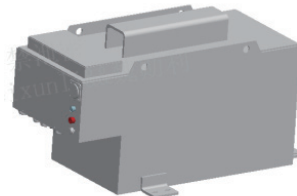


Drivetrain system

- It is configured with lithium iron phosphate (LiFePO₄) battery, which has higher energy density than lead-acid battery and higher safety than ternary lithium battery.
- With large capacity and longer durability, the battery is integrated with BMS management, optimized charging/discharging, self-testing and remote monitoring functions, which significantly improves fast charging performance, while ensuring prolonged service life and zero maintenance. Thanks to the unique design for fast change reservation, the battery can be replaced conveniently.
- The vehicle adopt an onboard charger with two plugs respectively for slow charging(standard equipment),and fast charging(optional equipment), which can be used according to actual needs.
- The traveling system is incorporated with dual motors, i.e., permanent magnet synchronous motors, which are used in combine with reducers to achieve power transmission. The permanent magnet synchronous motors feature high power density, high torque density, greater efficiency and lower energy consumption. The reducers are integrated with the brakes to ensure optimal braking effect.



Travel motor

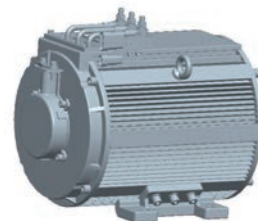


Battery



Hydraulic system

- The pump motor adopt permanent magnet synchronous motor. The hydraulic system is equipped with a silent gear pump to minimize the noise level. All hydraulic hoses are made of high-strength rubber in order to improve the safety and reliability.
- With the working hydraulic system based on electronic control, the machine is able to perform various operations efficiently and accurately.
- Configured with automatic lifting and leveling function as standard, the working hydraulic system is able to perform combined operation of boom lifting and bucket tipping, and ensure automatic bucket leveling when the lifting arm is elevated, thus realizing smooth and efficient operation. With proportional adjustment of auxiliary flow output as well as stepless adjustment function, the system can be operated at any flow rate constantly. Higher tool flow output can make tools work more efficiently.



Pump motor



Gear pump



Operating unit and bucket

- The operating unit is designed with lightweight structure; the lifting arm features higher load capacity; and all hinge pins are made of high-strength materials to improve the service life of structural parts. The lubricating nipples at all pivots are arranged in optimized positions to improve the accessibility.
- The main wear parts of the bucket are made of high-strength wear-resistant plates to ensure reliable structure. The front boom pivot is designed with built-in dust-proof device, which can provide effective protection for the lower pin. Top-mounted beam is provided to protect the dump cylinder effectively.



Boom



Quick bracket



Bucket

Main features



Frame

- The frame of the machine is reasonably arranged and designed with a reliable structure to minimize pressed profile and irregular welds, reinforce load-bearing parts, and perfectly withstand torsion and impact loads under various complex operating conditions. The sprocket transmission boxes on both sides are integrated with the frame in order to save space and improve the reliability of the overall structure.



Frame



Cab

- With large interior space and wide field of view, the cab features C-type appearance with XCMG family-style design, which is not only ergonomically configured with instruments in optimal layout, and all buttons/switches within easy reach, but also equipped with a safety handrail to prevent the operator from accidentally leaving the seat, as well as other standard safety measures to ensure the safety of the operator. The cab is made of tubular frame with equal cross-section and special shape, and is integrated with ROPS and FOPS structure according to safety standards, ensuring improved safety of the machine during operation. The mechanical suspension seat, featuring anti-vibration performance, can be adjusted at different angles according to the comfort of the human body, and is configured with a 2" wide seat belt as standard. The air conditioner features excellent performance due to optimized internal air duct, balanced flow field and stable temperature control, and is integrated with glass defrosting and foot warming functions. 7" LED touch screen and optional reversing camera are also provided.



Cab

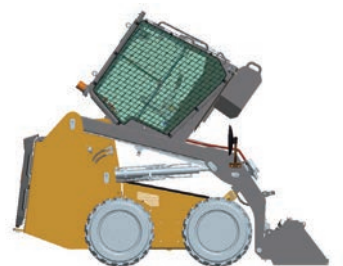


Display



Maintainability

- One-piece cab design and integral structure of the cab and the foot compartment box guarantees excellent sealability. The cab can be tilted back for better accessibility. In addition to fewer maintenance-required parts, all maintenance points for oil level inspection, fuel, oil and grease filling, etc., are easily accessible, and the maintenance and replacement of air filter elements and electrical equipment can be carried out conveniently. The cab can be tilted back at a large angle, and the upper part of the rear cover can be fully opened, in order to guarantee one-stop maintenance of all key components inside the machine.
- The machine supports remote message reading, fault diagnosis, remote program upgrade, and real-time monitoring of vehicle status.



Cab tilted up



Versatility

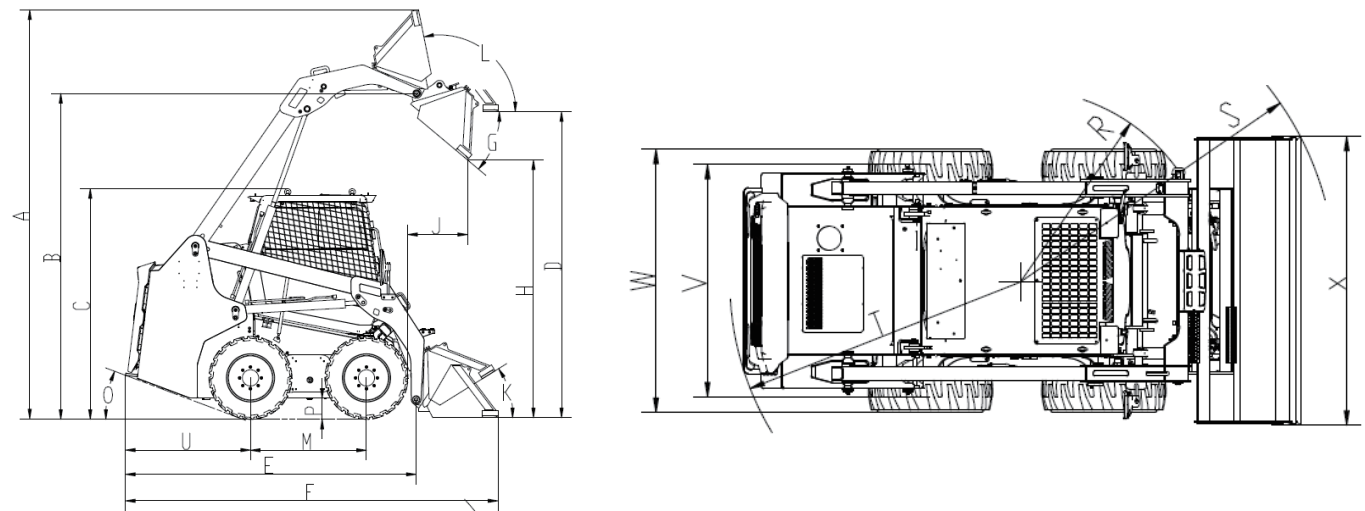
- XC7-SR07E skid steer loader can be equipped with a variety of tools, such as enclosed sweeper, fork, 4-in-1 bucket, auger bit, hammer, snow pusher, string rod, grass clamp, manure pusher, hook, in order to meet different operating conditions.

Main Specifications

OPTIMUM SERVICES XCMG GUARANTEED



Dimensions



Parameter				Unit	XC7-SR07E
Rated load				kg	910
Tipping load				kg	1820
Operating weight				kg	3150
Max breakout force				kN	21.5
Max tractive force				kN	25
Battery	Type	—			Lithium-ion battery
	Capacity	kW*h			32.96
	Voltage	V			80
	Durability	h			3-4
Fast charging (optional equipment)	Rated power	kW			16
	Input voltage	V			380±15%
	Charging time	h			1.8h (15%~90%) 2.4h (0%~100%)
Onboard charger	Rated power	kW			3.3
	Input voltage	V			90~265V
	Charging time	h			8.7h (15%~90%) 11h (0%~100%)
Travel motor	Type	—			Permanent magnet synchronous
	Rated power	kW			8.5
	Peak power	kW			15
Pump motor	Type	—			Permanent magnet synchronous
	Rated power	kW			15
	Peak power	kW			20
Performance parameters	Control	—			Electric control
	Tyre size	—			10-16.5
	Max speed	km/h			14
Hydraulic system	Hydraulic flow	L/min			79
	Hydraulic pressure	bar			210
	Total cycle time	s			≤10
Cab	ROPS	—			According to ISO 3471:2008
	FOPS	—			According to ISO 3449:2005 Level I

Parameter				Unit	XC7-SR07E
A	Max operating height			mm	3800
B	Bucket pivot height			mm	3020
C	Height - top of cab			mm	1960
D	Max height - with bucket bottom parallel to ground			mm	2865
E	Length - without bucket			mm	2703
F	Length - with bucket			mm	3410
G	Dumping angle			°	40
H	Max dumping height			mm	2400
K	Rollback angle on ground			°	32
L	Rack back angle - max height			°	101
J	Dumping range			mm	550
M	Wheel base			mm	1079
O	Departure angle			°	22
P	Ground clearance			mm	185
R	Front turning radius (without bucket)			mm	1212
S	Front turning radius (with bucket)			mm	1952
T	Rear turning radius			mm	1792
U	Rear length			mm	1162
V	Wheel track			mm	1370
W	Tire edge width			mm	1640
X	Bucket edge width			mm	1800
—	Bucket capacity			m³	0.45
—	Hydraulic oil tank capacity			L	30



XCMG approved attachments



Genuine parts



Financial solutions



Maintenance contract



Telematics

Professional Integrated Complete Solutions

XCMG has built a strong reputation based on the quality, reliability and durability of its construction machinery. What's more, XCMG has gradually established a service network to constantly provide its local integrated and highly efficient complete solutions for all customers.

Full Range of Services Ready for you

In order to respond to your needs as fast as possible, XCMG's experts are on their way to your job site from one of our facilities near you. Full range of services are available in order to reduce your total cost of ownership and increase your revenue.



XCMG Global Spare Parts System

