

### CBD20/25/30-470 Electric Ride-on Pallet Truck

#### Configuration and performance

- Electronic power steering system, light and low noise.
- Drive unit floating bodies with patent design.
- AC Driving system, No carbon brush, maintenance free.
- Electromagnetic, regenerative braking system.
- Automatic lifting limit, extend the life of the battery and motor.

#### Safety

- Curve automatic deceleration devices, more safe.
- Stepless speed control system, safe and quiet.
- Controller with Multiple automatic protection.
- Emergency reversing device/ Emergency brake switch.

#### Option

- Lithium battery



EPS | AC

Steering automatic deceleration

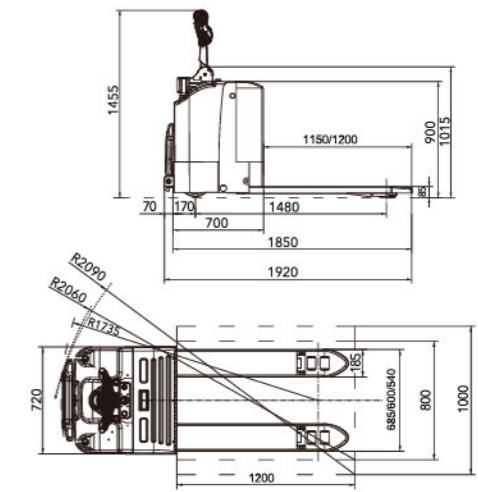
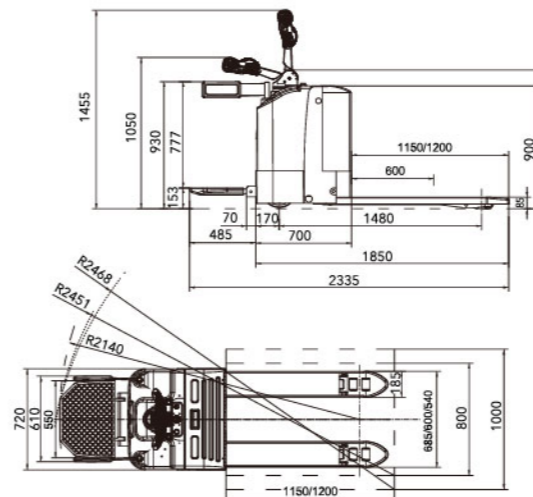
Customized Wide Legs

• The difference between CBD20-470 and CBD20-460

| Model | Load capacity (kg) | Battery capacity (Ah) |        | Overall fork width (mm) | Battery installation |
|-------|--------------------|-----------------------|--------|-------------------------|----------------------|
|       |                    | Standard              | OPTION |                         |                      |
| 470   | 2000-3000          | 280                   | 360    | 540/600/650/685/1070    | Hoisting             |
| 460   | 2000-3000          | 270                   | 210    | 550/600/650/685         | Side-loaded battery  |

| Feature  |      |   |
|--|------|---|
| Model  |      | CBD20/25/30-470                                   |
| Loading capacity   | kg   | 2000/2500/3000                                    |
| Load center  | mm   | 600   |
| Wheel base   | mm   | 1480  |
| Operating type   |      | Stand On  |
| Wheels   |      |   |
| Wheels type  |      | PU  |
| Wheel quantity Driving wheel/Balance wheel/Bearing wheel |      | 1/2/4   |
| Driving wheel size                                       | mm   | ∅ 248×75  |
| Bearing wheel size                                       | mm   | ∅ 84×80(Double wheels)                            |
| Balance wheel size                                       | mm   | ∅ 115×55  |
| Dimension  |      |   |
| Min.fork lowered height                                  | mm   | 85  |
| Max.fork lifting height                                  | mm   | 205   |
| Max.lifting height                                       | mm   | 120   |
| Overall fork width                                       | mm   | 540/600/650/685                                   |
| Inside width between forks                               | mm   | 200/260/310/345                                   |
| Fork length  | mm   | 1150/1200   |
| Fork width   | mm   | 170   |
| Fork thickness   | mm   | 75  |
| Overall length   | mm   | 1920/2335   |
| Overall width  | mm   | 720   |
| Overall height(With handle)                              | mm   | 1455  |
| Overall height(Without handle)                           | mm   | 900   |
| Min.Turning radius                                       | mm   | 1735/2140   |
| Min.Aisle width for pallets 800×1200                     | mm   | 2060/2451   |
| Min.Aisle width for pallets 1000×1200                    | mm   | 2090/2468   |
| Performance  |      |   |
| Travel speed,laden/unladen                               | km/h | 6/16  |
| Lift speed,laden/unladen                                 | mm/s | 30/35   |
| Lowering speed,laden/unladen                             | mm/s | 40/35   |
| Gradeability,laden/unladen                               | %    | 6/16  |
| Electrical configuration                                 |      |   |
| Drive motor  | kW   | AC 1.5  |
| Lift motor   | kW   | DC 1.2  |
| Steering motor   | kW   | DC 0.15   |
| Brake  |      | Electromagnetic/Regenerative                      |
| Battery  |      |   |
|  |      | Lead-acid battery      Lithium battery (Optional) |
| Battery voltage / capacity                               | V/Ah | 24/280      24/200                                |
| Controller   |      | ZAPI      ZAPI                                    |
| Battery weight   | kg   | 238      104                                      |
| Service weight with battery                              | kg   | 784      613                                      |

\* Details of specifications and equipment are based on information available at time of printing and may change without notice.



**ANHUI HELI CO., LTD.**

ADD: NO.668 Fangxing Street, Economical Development Zone, Hefei, P.R. China  
 TEL: (86 551)63639068 (America) 63639258 (Europe) 63639358 (Asia)  
 63662105 (Africa & Middle East) 63639530 (Key Accounts division)  
 63662105 (Wheel loader)  
 FAX: (86 551)63639966  
 WEBSITE: <http://www.heliforklift.net>  
 Email: [heli@helichina.net](mailto:heli@helichina.net)

AUTHORIZED DEALER